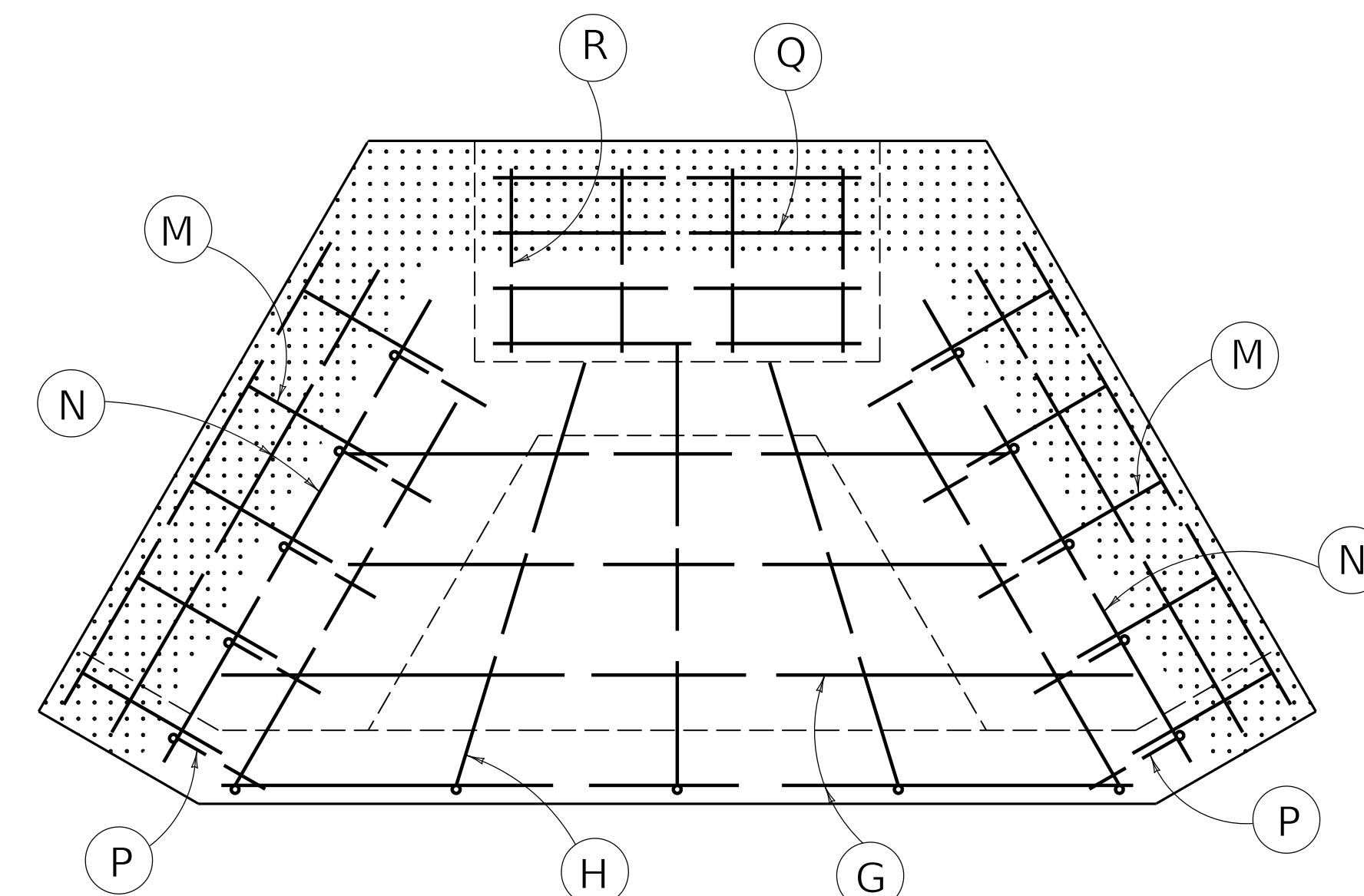
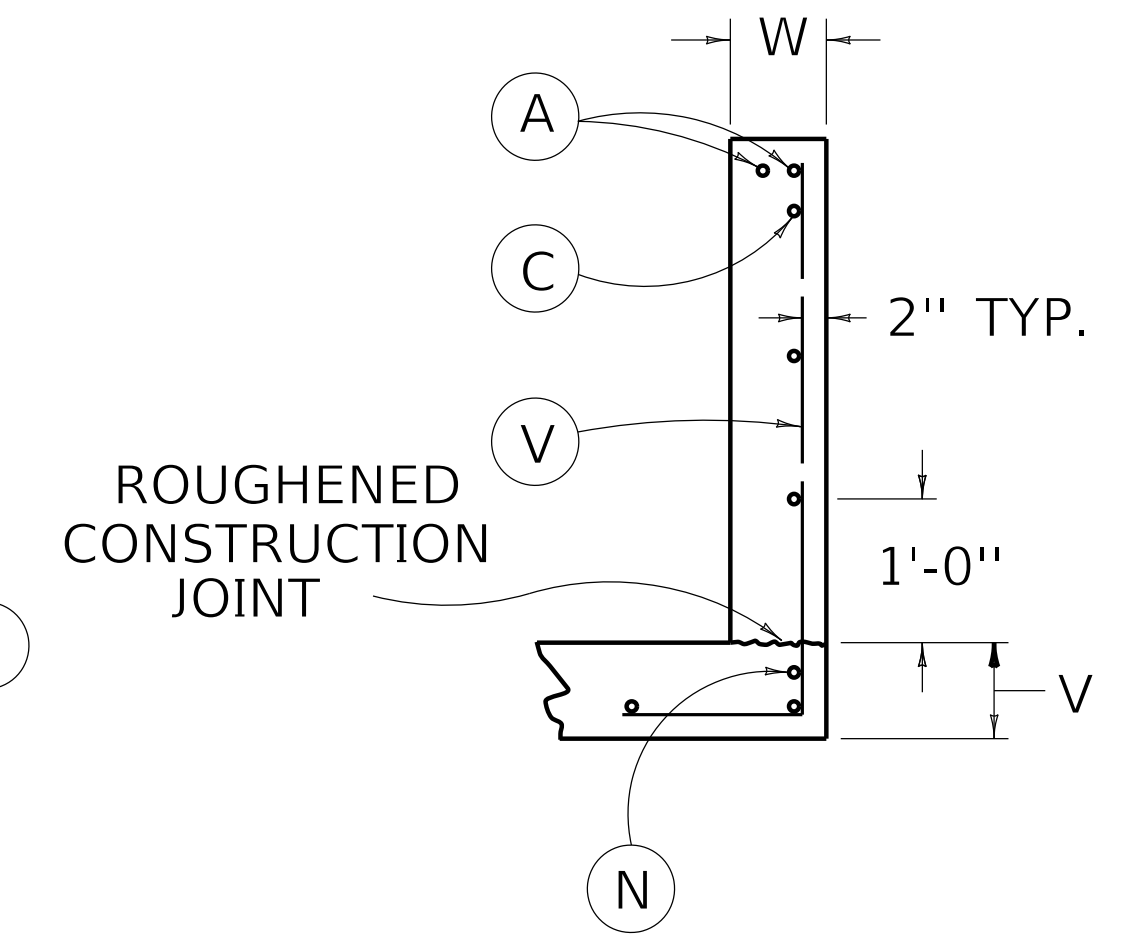


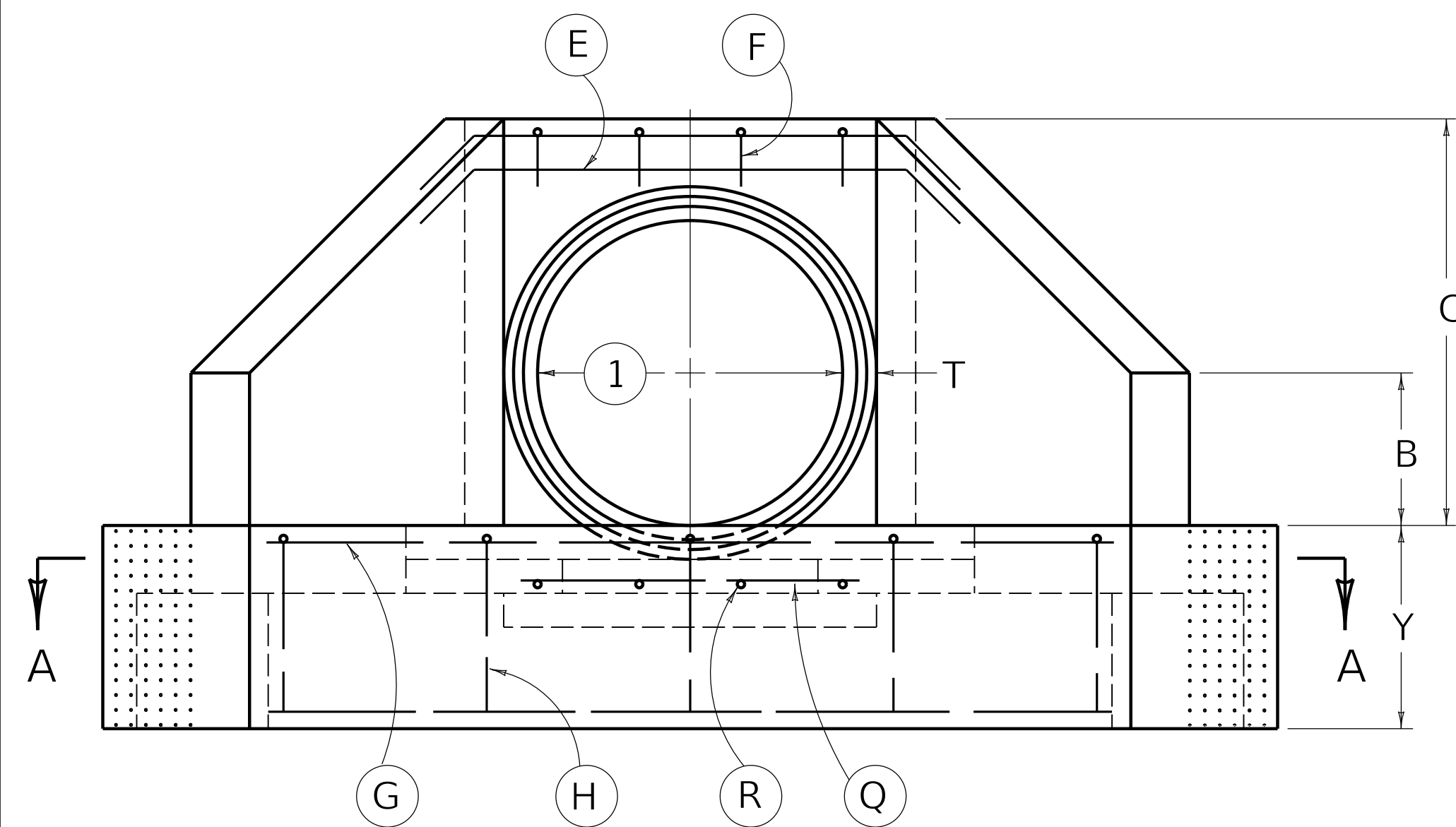
PLAN VIEW



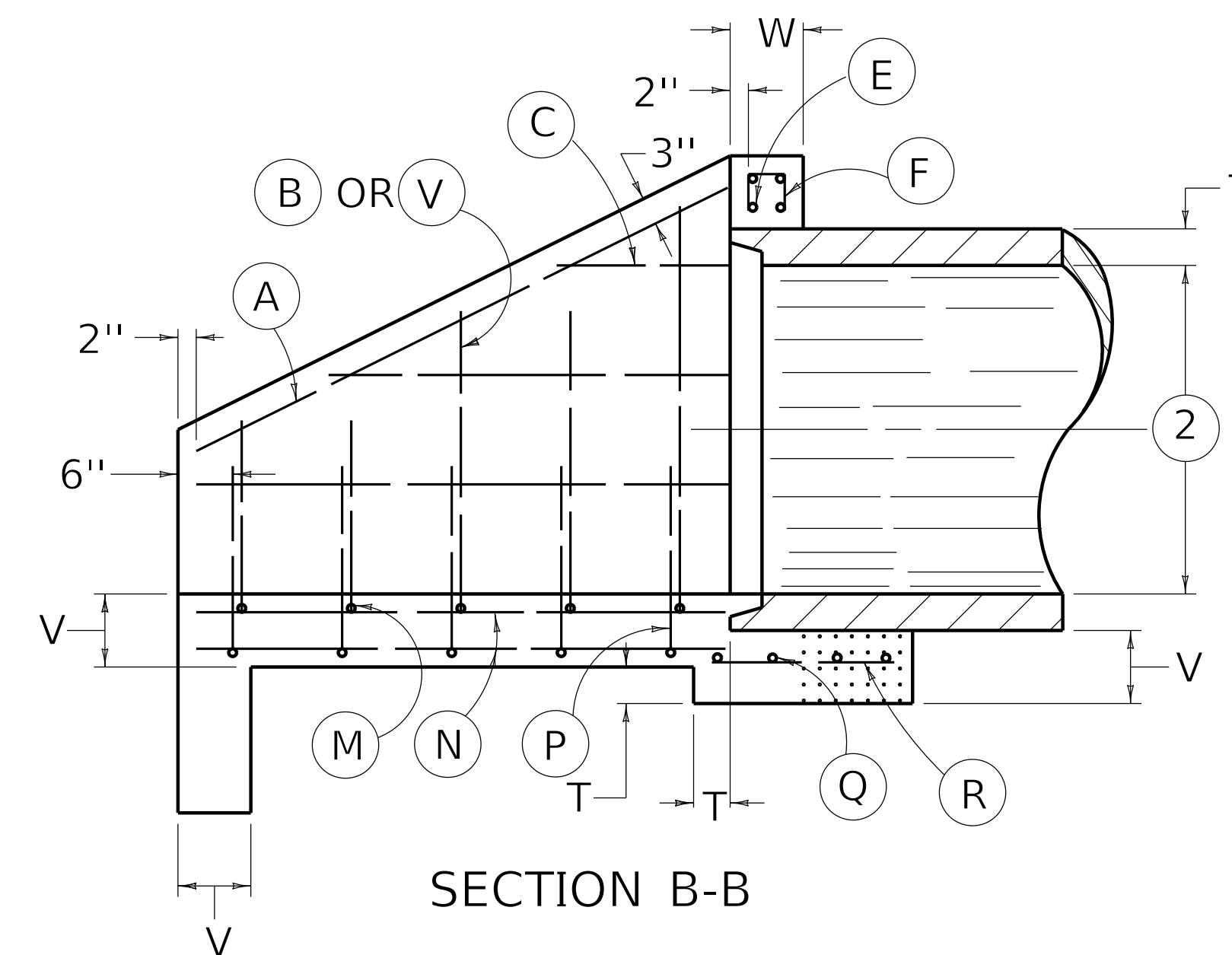
SECTION A-A



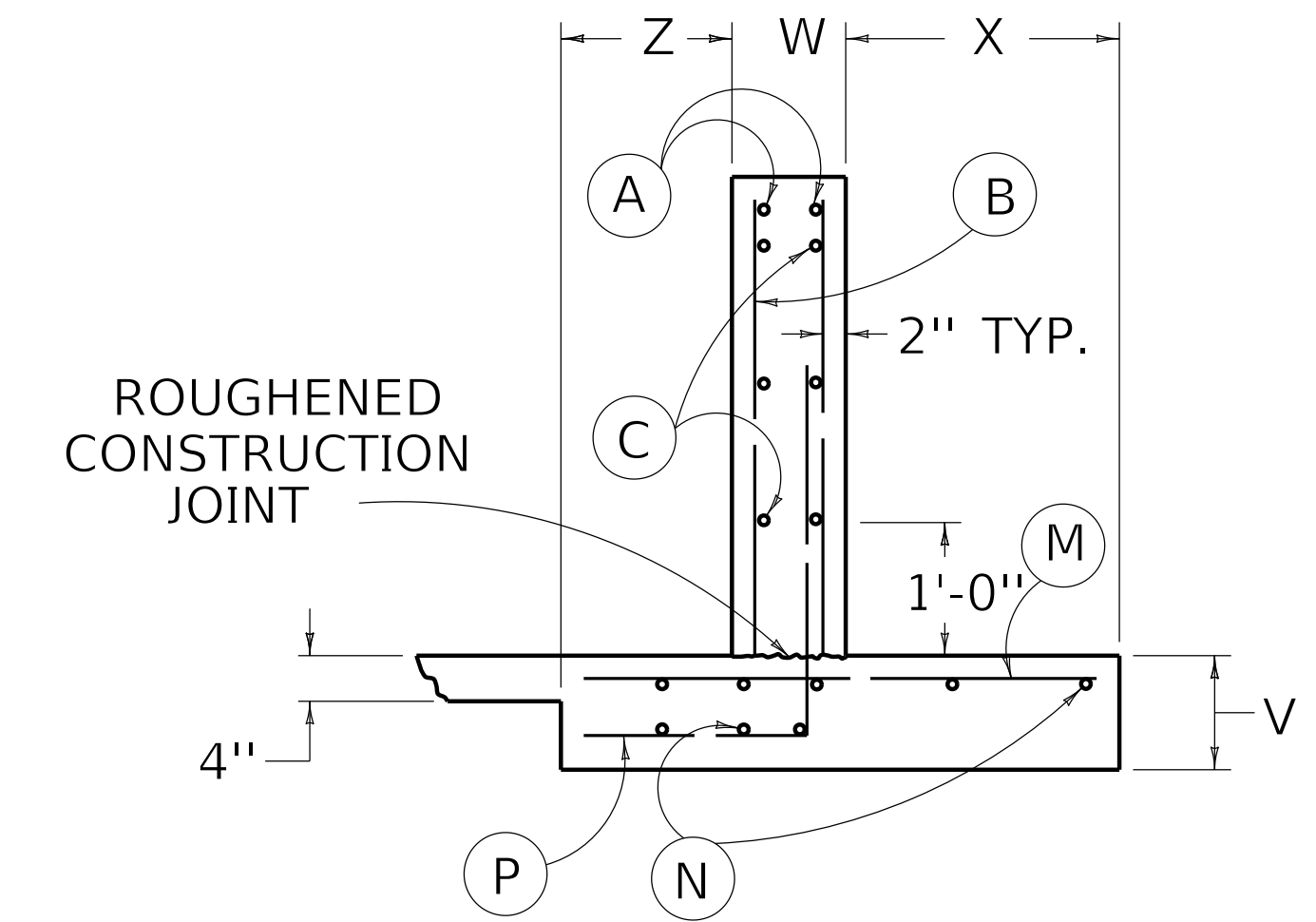
WING SECTION  
30" TO 60" CIRCULAR PIPE  
30" TO 72" NON-CIRCULAR PIPE



FRONT ELEVATION



SECTION B-B



WING SECTION  
66" TO 108" CIRCULAR PIPE

- ① DIAMETER OF CIRCULAR PIPE OR SPAN OF NON-CIRCULAR PIPE
- ② DIAMETER OF CIRCULAR PIPE OR RISE OF NON-CIRCULAR PIPE
3. [Pattern] APPLIES TO 66" DIAMETER AND GREATER. (CIRCULAR PIPE)
4. SEE CURRENT STANDARD DRAWINGS RDH-200 AND 300 SERIES FOR DIMENSIONS, QUANTITIES, AND BILL OF REINFORCEMENT.
5. DIMENSIONS FROM FACE OF CONCRETE TO STEEL SHALL BE 2" CLEAR DISTANCE.
6. ENCIRCLED LETTERS, ( ), INDICATE STEEL BAR LOCATIONS
7. BARS (B), (C), (G), (P), (M), (V) ARE SPACED 1'-0" O.C. ALL OTHER BARS SHALL BE EVENLY SPACED.
8. BARS (B) AND (V) ARE PLACED IN ORDER OF INCREASING LENGTHS, BEGINNING AT THE END OF EACH WING.
9. BARS (C) ARE PLACED IN ORDER OF INCREASING LENGTHS, BEGINNING AT THE TOP OF EACH WING.
10. HEADWALLS LOCATED AT EDGE OF SHOULDER SHALL BE PARALLEL TO CENTERLINE OF THE ROAD.
11. APRON BETWEEN WINGS SHALL BE SLOPED IN DIRECTION OF FLOW EQUAL TO SLOPE OF PIPE. FRONT FACE OF HEADWALL AND ENDS OF WINGS SHALL REMAIN VERTICAL.

(LAYOUT AND STEEL PATTERN)

**KENTUCKY  
DEPARTMENT OF HIGHWAYS**

*PIPE CULVERT  
HEADWALLS  
0° SKEW*

STANDARD DRAWING NO. RDH-110-02

SUBMITTED \_\_\_\_\_ DIRECTOR DIVISION OF DESIGN \_\_\_\_\_ DATE \_\_\_\_\_

APPROVED \_\_\_\_\_ STATE HIGHWAY ENGINEER \_\_\_\_\_ DATE \_\_\_\_\_